



PAPUA NEW GUINEA PUBLIC SERVICE



Form 002.1

JOB DESCRIPTION

1. IDENTIFICATION

AGENCY Works & Highways	SYS. POSN. NO:	REF. NO: 12FOPPTS11
OFFICE Works	DESIGNATION/CLASSIFICATION: Technical Officer (Light/Medium Engines) - Grade 11	
DIVISION Plant & Transport	LOCAL DESIGNATION: Technical Officer (Light/Medium Engines)	
BRANCH Office of Provincial Mechanical Engineer	REPORTING TO: Senior Technical Officer Light/Medium Engines	SYS. POS. NO: REF. NO:
SECTION Maintenance & Workshop	LOCATION Kerema, Gulf Province	

HISTORY OF POSITION

FILE REF.	DATE OF VARIATION	DETAILS
111 – 60 – A00	01/12/2015	Re-no , Re-design , Re-class

2. PURPOSE

Under direction and supervision of the STO Light to Medium Engines (LME) perform repair & maintenance work on motor vehicles, forklifts, outboard motors, compressors and the like.

3. DIMENSIONS

This job is responsible for assisting the STO in the sustenance of functionality leading to effective operations of Light/Medium Engines and equipment.

4. PRINCIPLE ACCOUNTABILITIES

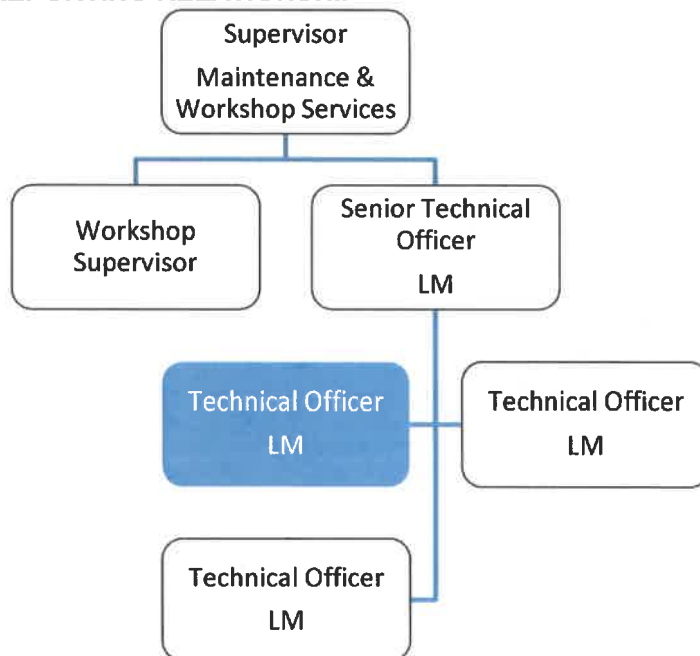
- 4.1 Maintain and replace brake actuators, batteries, starter motors, mechanical fuel pumps and hydraulic cylinders/pumps/control valves and others.
- 4.2 Service drive shafts, universal joints, service brake shoes, water pumps and turbochargers.
- 4.3 Maintain and replace cylinder heads, high-pressure fuel injection pumps and road wheels.
- 4.4 Adjust engine speed of governor/valves, carburetors, steering brakes, fuel injector racks and steering unit brake levers.
- 4.5 Charge suspension accumulators, transmission shift accumulators and main hydraulic accumulators.

5. MAJOR DUTIES

- 5.1 Take charge of small trades to undertake allocated work. Undertake skilled work either single or leader of a team, quality assurance workmanship and standards.
- 5.2 Train apprentices, trade assistants and assist with the development of qualified tradesman.
- 5.3 Follow procedural paper work and allocate work priorities.
- 5.4 Diagnose faults about carry out investigations and cost estimates as required.
- 5.5 Order spare parts and supervise major/minor repairs to plant and equipment that standards and procedures are adhered to.
- 5.6 Other duties as directed, consistent with above.

6. NATURE AND SCOPE

6.1 REPORTING RELATIONSHIP



6.2 WORKING RELATIONSHIP

(a) Internal

The TO Light/Medium Engines reports to STO Light Medium on matters relating to his/her job. Liaise with other staffs of the division.

(b) External

Not Applicable.

6.3 WORK ENVIRONMENT

This position being responsible is substantially a statutory, specialized and technical position in forefront of sustained functionality of light/medium engines and equipment.

7. CONSTRAINTS FRAMEWORK AND BOUNDARIES

RULES & PROCEDURES	<ul style="list-style-type: none"> ▪ Public Finance (Management) Act ▪ Public Service (Management) Act ▪ Public Service General Orders ▪ Public Service Code of Ethics ▪ Department of Works – PTD Plant Manual
EXPECTED BEHAVIOUR	<ul style="list-style-type: none"> ▪ Information Confidentiality ▪ Customer Service & PR ▪ Co-operation & Transparency to Supervisor & Co-worker ▪ Work Output Accuracy
DECISION-MAKING ABILITY	<ul style="list-style-type: none"> ▪ Determines and makes duties within the scope of his work
RECOMMENDATIONS	<ul style="list-style-type: none"> ▪ Submit recommendations to higher authorities for consideration and approval based on the scope of the job.

8. CHALLENGES

- The TO Light/Medium Engines is bound to operate within the principles outlined or specified in the job descriptions.
- Promote better working relationship within the division
- Initiate and develop changes for the betterment of the division.

9. QUALIFICATIONS, EXPERIENCES AND SKILLS

(a) Qualification

Qualified with a trade certificate in light to medium engines and/or equivalent in relevant trade from a recognized college or educational institution.

(b) Knowledge

- Knowledge of maintenance and operation of light/medium plant vehicles/equipment.
- Engine repair and tune-up.
- Troubleshoot mechanical and electrical problems. Troubleshoot hydraulic systems
- Repair and replace body panels, fenders and radiators.
- Hands on 'real world' mechanical experience and knowledge.

(c) Skills

- Lead/advice/train and supervise apprentices.
- Supervisory ability, administrative procedures, public relations, and onsite training.
- Must possess driving license and preferably plant operator licence to qualify to test plants.
- Competent in evaluation and technical report presentation.
- Sound computer literacy (MS Word/Excel, PPT, etc.).
- Good grasp of the English language (verbal and written).
- Innovative, inventive and analytical, able to pre-empt and resolve problems with ease.

(d) Works Experience

A minimum of three (3) years or more work experience in light/medium plant and equipment maintenance.