



PAPUA NEW GUINEA PUBLIC SERVICE

**JOB DESCRIPTON**



Form 002.1

**1. IDENTIFICATION**

<b>AGENCY</b> Works & Highways	<b>SYS. POSN. NO:</b>	<b>REF. NO:</b> 45FOPPTS04	
<b>OFFICE</b> Works	<b>DESIGNATION/CLASSIFICATION:</b> Senior Technical Officer (Auto Electrical) - <b>Grade 13</b>		
<b>DIVISION</b> Plant & Transport	<b>LOCAL DESIGNATION:</b> Senior Technical Officer (Auto Electrical)		
<b>BRANCH</b> Office of Provincial Mechanical Engineer	<b>REPORTING TO:</b> Workshop Supervisor	<b>SYS. POS. NO:</b>	<b>REF. NO:</b>
<b>SECTION</b> Maintenance & Workshop	<b>LOCATION</b> Buka, Autonomous Region of Bougainville		

**HISTORY OF POSITION**

<b>FILE REF.</b>	<b>DATE OF VARIATION</b>	<b>DETAILS</b>
111 – 60 – A00	01/12/2015	Re-no , Re-class

**2. PURPOSE**

Assist the Supervisor Maintenance & Workshop Services and lead a team of technical officers (auto-electricians) engaged to undertake repair & maintenance work electrical wiring and computer-based equipment on all engine types deployed by PTD to the provinces and those of other government and non-government institutions at market rates.

**3. DIMENSIONS**

Position is strategically designed to provide leadership technical advice and support to the Auto Electrical Team within the PTD provincial set-up and is adequately supported to be functional.

**4. PRINCIPLE ACCOUNTABILITIES**

- 4.1 Carry out electrical repair & maintenance work on all Plant & Transport units deployed.
- 4.2 Introduce electrical modifications to existing operating systems to suit purpose

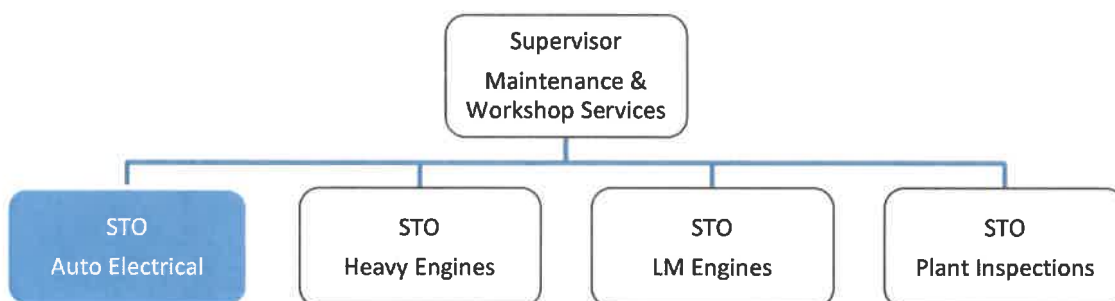
**5. MAJOR DUTIES**

- 5.1 Work with computer-controlled engine management systems.
- 5.2 Service, identify and repair faults on electronically controlled vehicle systems such as electronic fuel injection, electronic ignition, anti-lock braking, cruise control, automatic transmission, airbags and air conditioning.
- 5.3 Install electrical equipment such as gauges, lighting, alternators and starter motors in vehicles.

- 5.4 Install electrically operated accessories such as radios, heating or demisting equipment, air conditioners, driving lamps and anti-theft systems.
- 5.5 Refer to circuit diagrams and use meters and test instruments to find electrical faults.
- 5.6 Adjust engine control system and timing to ensure vehicles are running at peak performance.
- 5.7 Test, recondition and replace faulty alternators, generators, starter motors and related items such as voltage regulators and batteries.
- 5.8 Repair or replace faulty ignition, electrical wiring, fuses, lamps and switches.
- 5.9 Use hand tools, specialized electrical tools, instruments and machines, including drills, grinders, presses and lathes.

## 6. NATURE AND SCOPE

### 6.1 REPORTING RELATIONSHIP



### 6.2 WORKING RELATIONSHIP

#### (a) Internal

- The STO Auto Electrical reports to Supervisor Maintenance & Workshop Services on matters relating to his/her job.
- Liaise with other staffs of the division.

#### (b) External

Not Applicable

### 6.3 WORK ENVIRONMENT

This being a statutory and specialist position is technical in nature to allow for functionality where continuous operations is the core business.

## 7. CONSTRAINTS FRAMEWORK AND BOUNDARIES

RULES & PROCEDURES	<ul style="list-style-type: none"><li>▪ Public Finance (Management) Act</li><li>▪ Public Service (Management) Act</li><li>▪ Public Service General Orders</li><li>▪ Public Service Code of Ethics</li><li>▪ Department of Works – PTD Plant Manual</li></ul>
EXPECTED BEHAVIOUR	<ul style="list-style-type: none"><li>▪ Information Confidentiality</li><li>▪ Customer Service &amp; PR</li><li>▪ Co-operation &amp; Transparency to Supervisor &amp; Co-worker</li><li>▪ Work Output Accuracy</li></ul>
DECISION-MAKING ABILITY	<ul style="list-style-type: none"><li>▪ Determines and makes duties within the scope of his work</li></ul>
RECOMMENDATIONS	<ul style="list-style-type: none"><li>▪ Submit recommendations to higher authorities for consideration and approval based on the scope of the job.</li></ul>

## 8. CHALLENGES

- The STO Auto Electrical is bound to operate within the principles outlined or specified in the job descriptions.
- Promote better working relationship within the division
- Initiate and develop changes for the betterment of the division.

## 9. QUALIFICATIONS, EXPERIENCES AND SKILLS

### (a) Qualification

Qualified with a trade certificate in repair of electrical and electronic systems in plant and vehicle engines and/or equivalent in from a recognized college or educational institution.

### (b) Knowledge

- Deep understanding of both electrical systems and engines of varying sizes.
- Hands on 'real world' mechanical experience and knowledge.

### (c) Skills

- Supervisory ability, administrative procedures, public relations, and onsite training.
- Competent in evaluation and technical report presentation.
- Sound computer literacy (MS Word/Excel, PPT, etc.).
- Good grasp of the English language (verbal and written).
- Innovative, inventive and analytical, able to pre-empt and resolve problems with ease.

### (d) Works Experience

At least five (5) year or more of work experiences in maintenance of light to medium engines as a Technical Officer.